

NeoPhotonics S500 Power Monitor Software Manual












Installation - S500 Power Monitor Software	2
List of Directories.....	2
Installation - Drivers for Windows XP / Windows 7	3
NeoPhotonics S500 Power Monitor Program.....	4
Startup	4
Import License files.....	4
Basic Controls.....	5
Tips and Troubleshooting	6
Measuring Multiple Wavelengths with a Single Monitor	6
Troubleshooting the Software	6

Installation - S500 Power Monitor Software

1. Run NeoPhotonicsS500FullDevKitSetup.exe.
2. Follow the instructions as prompted in each consecutive setup window.
3. Complete installation and exit the Installer.

List of Directories

1. LibFiles - S500 API Library files for customized program developing
2. Manuals - S500 API Interface DLL Programmer Guide
S500 Power Monitor Software Manual
3. NeoLicense - Folder to save S500 license files
4. Samples - Sample source code by using API++ for S500 power monitor
5. USBDriver - S500 USB driver

 LibFiles	2016/4/14 17:42	File folder	
 Manuals	2016/4/14 17:42	File folder	
 NeoLicense	2016/4/13 17:32	File folder	
 Samples	2016/4/14 17:42	File folder	
 Uninstall	2016/4/14 17:42	File folder	
 USBDriver	2016/4/14 17:42	File folder	
 lua5.1.dll	2016/4/14 17:42	Application extens...	319 KB
 NeoPhotonics S500 Power Monitor.exe	2016/4/14 17:27	Application	550 KB
 ReleaseNotes.txt	2016/4/13 16:55	Text Document	2 KB
 S500API_NEO.dll	2016/3/23 11:42	Application extens...	267 KB
 uninstall.exe	2016/4/14 17:42	Application	1,310 KB

Installation - Drivers for Windows XP / Windows 7

1. Plug in NeoPhotonics S500 Monitor.

If new hardware wizard window does not open:

- a. Right click on My Computer and select Properties.
- b. Select the Hardware tab.
- c. Select Device Manager.



- d. Expand “Other Devices” list, right-click on “MSP430-USB Example” and select “Update Driver”



2. Select “Install item from a specific location” and click Next.
3. Select “Include this location in the search” and browse to the folder where the driver is located. The driver for the Series 500 is located in folder USBDriver, file name is “1CDC_descTool.inf”.
4. Once the folder has been selected click Next.



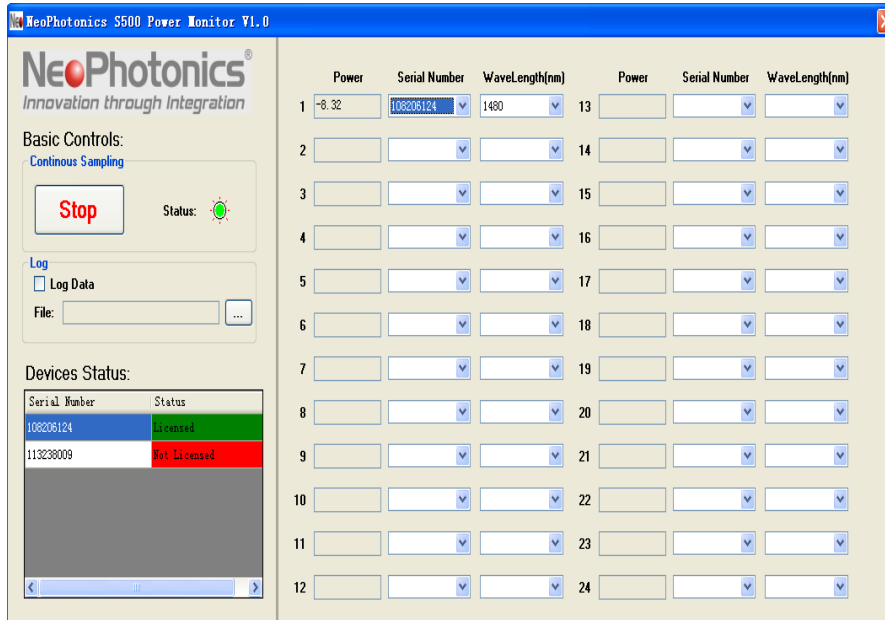
5. Follow instructions as prompted until confirmation of software installation.



NeoPhotonics S500 Power Monitor Program

Startup

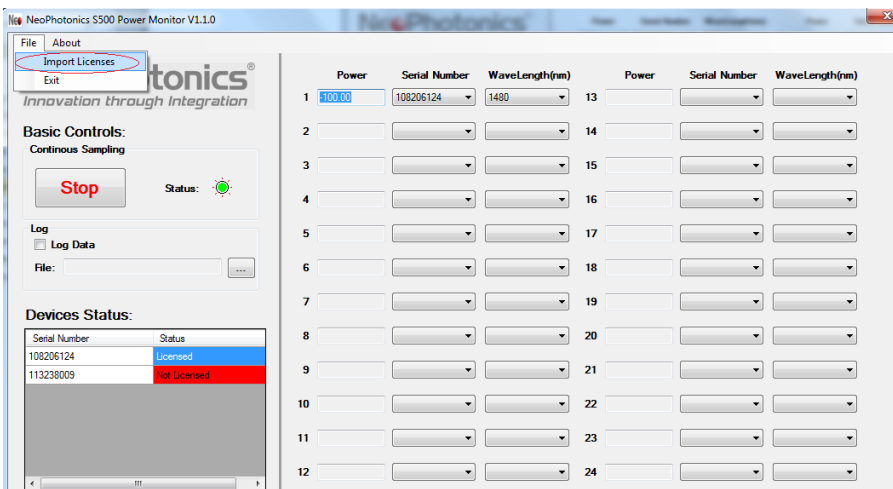
1. Plug in NeoPhotonics S500 devices prior to starting the program. Double-click on Executable file “Neophotonics S500 Power Monitor” (installation directory or start menu).
2. All the S500 devices should be listed with their license status in the section “Device Status”



The software can support up to 24 simultaneously.

Import License files

1. Go to File, then Import Licenses.
2. Select the file [Serial Number].lic, Click Open (license file is now imported in NeoLicense folder)
3. Accept to restart the software in order to enable the serial number.
4. Multiple license files can be imported one by one.



Basic Controls

5. Continuous sampling
 - Select Start or Stop to command the continuous sampling.
6. Log
 - a) Check the “Log” box to start recording data in log file
 - b) Data are recorded in sequence (refresh time increases with number of devices)

DATE REC	TIME REC	SERIAL NO	P (dBm)	WAVE
08/27/2013	9:16:28 AM	111111111	-8.15	1550
08/27/2013	9:16:28 AM	123456789	-34.02	850
08/27/2013	9:16:28 AM	111111111	-8.15	1550
08/27/2013	9:16:28 AM	123456789	-34.00	850
08/27/2013	9:16:29 AM	111111111	-8.12	1550
08/27/2013	9:16:29 AM	123456789	-34.00	850
08/27/2013	9:16:29 AM	111111111	-8.12	1550
08/27/2013	9:16:29 AM	123456789	-34.02	850
08/27/2013	9:16:29 AM	111111111	-8.12	1550
08/27/2013	9:16:29 AM	123456789	-34.02	850
08/27/2013	9:16:29 AM	111111111	-8.15	1550
08/27/2013	9:16:29 AM	123456789	-34.02	850
08/27/2013	9:16:30 AM	111111111	-8.12	1550
08/27/2013	9:16:30 AM	123456789	-34.02	850
08/27/2013	9:16:30 AM	111111111	-8.12	1550
08/27/2013	9:16:30 AM	123456789	-34.02	850
08/27/2013	9:16:30 AM	111111111	-8.12	1550
08/27/2013	9:16:30 AM	123456789	-34.02	850
08/27/2013	9:16:30 AM	111111111	-8.12	1550
08/27/2013	9:16:30 AM	123456789	-34.00	850
08/27/2013	9:16:31 AM	111111111	-8.12	1550
08/27/2013	9:16:31 AM	123456789	-34.00	850
08/27/2013	9:16:31 AM	111111111	-8.12	1550
08/27/2013	9:16:31 AM	123456789	-34.02	850
08/27/2013	9:16:31 AM	111111111	-8.12	1550
08/27/2013	9:16:31 AM	123456789	-34.02	850
08/27/2013	9:16:31 AM	111111111	-8.12	1550
08/27/2013	9:16:32 AM	111111111	-8.12	1550
08/27/2013	9:16:32 AM	123456789	-34.00	850
08/27/2013	9:16:32 AM	111111111	-8.12	1550
08/27/2013	9:16:32 AM	123456789	-34.00	850
08/27/2013	9:16:32 AM	111111111	-8.12	1550
08/27/2013	9:16:32 AM	123456789	-34.02	850
08/27/2013	9:16:32 AM	111111111	-8.12	1550
08/27/2013	9:16:33 AM	123456789	-34.02	850

7. Select device to measure
 - a) Select device serial number and wavelength to start measurement.
 - b) To skip one device, just select “blank” instead of a serial number.

Tips and Troubleshooting

Measuring Multiple Wavelengths with a Single Monitor

- If the device was calibrated at multiple wavelengths, it is possible to cycle through the calibrated wavelengths in the program: Select the same serial number in different channels and assign different wavelength.

Troubleshooting the Software

- Do not run multiple NeoPhotonics software applications simultaneously on the same computer or power monitor.
- Ensure that the monitors attached to the computer are registered to the software in use.
- Check that the log data code being entered is the correct code corresponding to the specific software serial number in use.
- Ensure that monitors are attached to an active USB port.
- NeoPhotonics does not support 3rd party USB hubs but if an external USB hub must be used, make sure that the hub is powered externally. Do not daisy chain/string together multiple Series 500 monitors to single powered USB slot on a computer.
- Do not rename COM ports in windows. Doing so may result in multiple monitors having duplicated names.
- If errors persist: unplug all monitors from computer, exit program. Then plug in monitors and restart program.